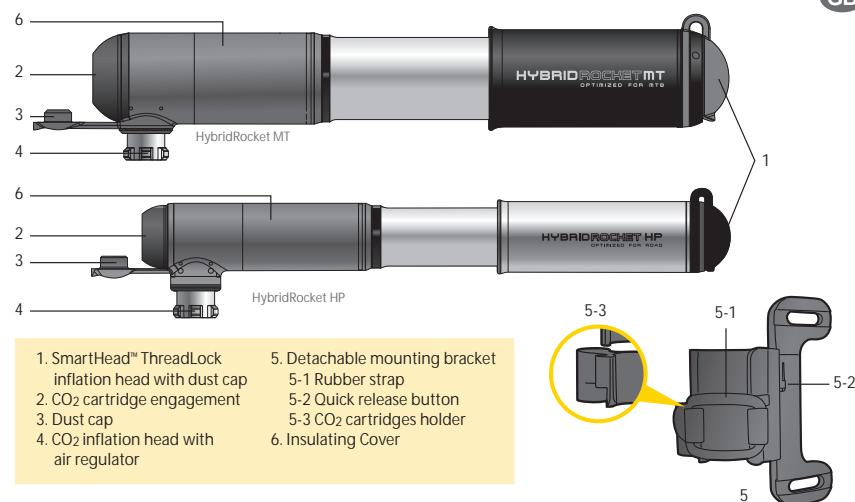




WARNING

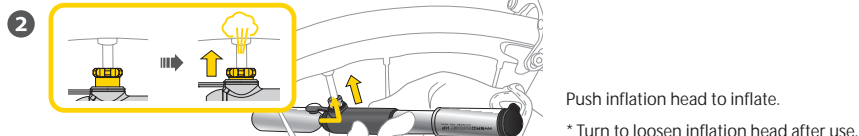
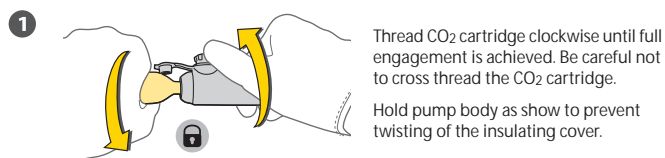
- Read this User's Guide thoroughly, comply with all instructions, and understand safety information before first use.
- To avoid possibly freezing your hand, make sure to wear full finger gloves before operation.
- CO₂ cartridge contains compressed high pressure CO₂ gas. Incorrect operation poses potential risk of harm to you or others nearby.
- During operation, DO NOT point the CO₂ cartridge towards you or others.
- Insure that the inner tube valve is open before inflating with CO₂ cartridge.
- Before disengaging CO₂ cartridge, insure all CO₂ gas has discharged. Failure to do so may cause bodily harm or damage to inflator head.
- Recommend to use Topeak Threaded CO₂ cartridges only.



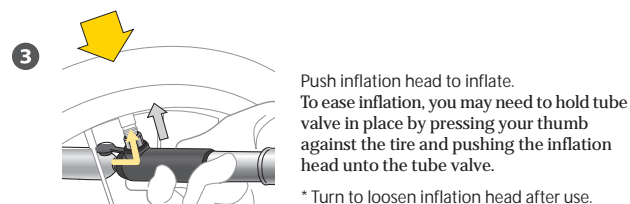
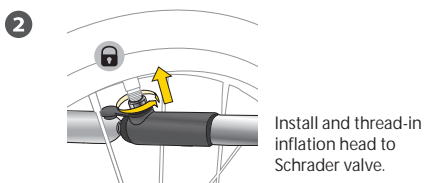
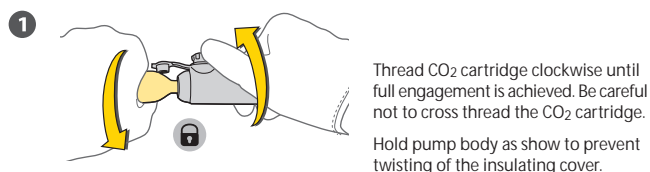
INFLATION

CO₂ Inflation

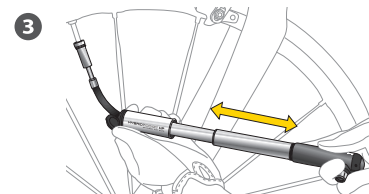
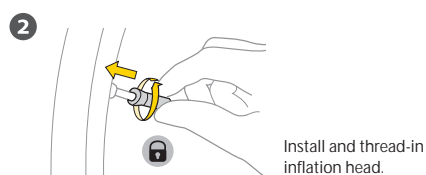
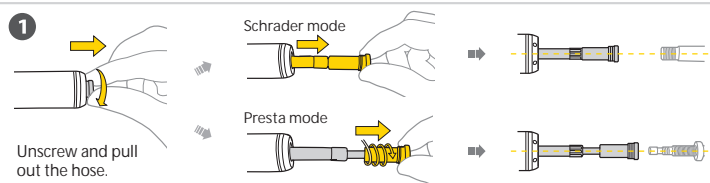
Presta Valve



Schrader Valve



Hand Inflation

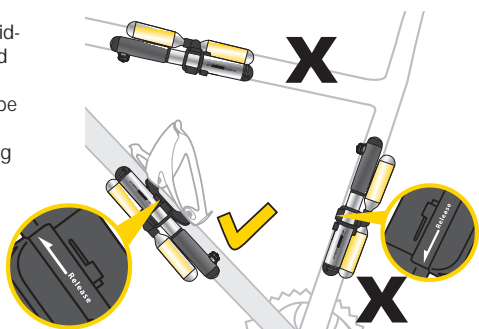


IMPORTANT NOTES (As HybridRocket HP example)

Make sure to install Hybrid-Rocket series pumps and CO₂ cartridges on Non-Drive side (left) downtube of bike only. The release arrow should be pointing towards the headtube.

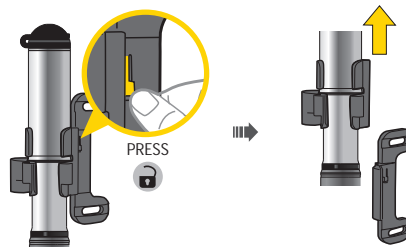
DO NOT install Hybrid-Rocket pumps on seattube, seatpost or toptube.

HybridRocket series pumps can be mounted on bike or detached and put inside backpack.

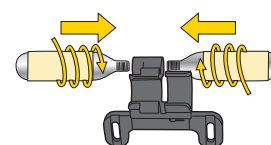


MOUNTING BRACKET FUNCTION

Quick Release



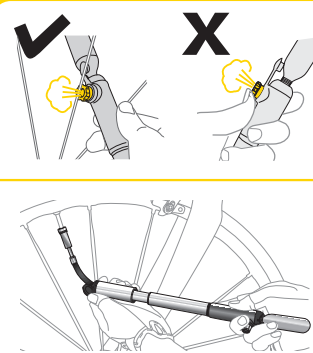
CO₂ Cartridge Storage



Mounting bracket of HybridRocket HP fits 16g CO₂ cartridge only. Mounting bracket of HybridRocket MT fits both 16g and 25g CO₂ cartridges.

WARNING

1. If using the CO₂ inflator continuously, make sure to wait 20 seconds in between cartridges for the rubber grommet inside the CO₂ inflation head to return to its original position. Otherwise, a gas leak may occur and prevent proper inflation.
2. Tighten the CO₂ cartridge before using CO₂ inflation function. Failure to do so will cause improper operation and may cause injury.
3. DO NOT remove CO₂ cartridge if it is still charged with gas. Completely discharge the CO₂ cartridge before removal.
4. When opening the CO₂ cartridge, point the CO₂ inflator away from yourself and others.
5. DO NOT use CO₂ Inflator if any part is cracked or broken.
6. DO NOT expose the CO₂ cartridge to heat, or store at temperatures above 120°F (49°C), or store in enclosed vehicles.
7. If the CO₂ gas does not flow smoothly, the rubber seal of the inflation head may be frozen and impede the flow of CO₂ gas.
8. The barrel and CO₂ cartridge may become extremely cold/ frosty when the CO₂ gas is expelled. DO NOT try to unscrew the CO₂ inflation head until it has warmed sufficiently to touch.
9. Keep out of reach of children.

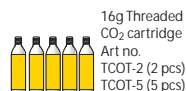


After each inflation, make sure all CO₂ gas has been discharged by pushing the CO₂ inflation head several times.

The mini pump handle and CO₂ cartridge should be held together when pumping. DO NOT hold the CO₂ cartridge only!

WARRANTY

2-year Warranty: All mechanical components against manufacturer defects only.
Warranty Claim Requirements
To obtain warranty service, you must have your original sales receipt. Items returned without a sales receipt will assume that the warranty begins on the date of manufacture. All warranties will be void if the product is damaged due to user crash, abuse, system alteration, modification, or used in any way not intended as described in this manual.
* The specifications and design are subject to change without notice.
Please contact your Topeak dealer with any questions.
For USA customer service call: 1-800-250-3068
www.topeak.com



The valve head o-ring is subject to wear and may cause air leakage over time. Periodically inspect and replace o-ring if needed.